



SAV HK LIMITED



BUSINESS DRONE ROBOTICS

ALL! VISION!!



DRONE THERMAL INFRARED DEVICE SAVD200S

SENSOR SIZE : 10.88* 8.704MM

PIXEL SIZE: : 17 UM

THERMAL SENSITIVITY : <50 MK@ F/1.0

EFFECTIVE PIXELS : 320,000 PIXELS (640*52)

LENS PARAMETERS : 13MM FIXED FOCUS

SPECTRAL RANGE : 7.5 - 13.5 UM

DETECTOR TYPE : FOCAL PLANE ARRAY(FPA),

VANADIUM OXIDE(VOX), MICROBOLOMETER

DATA ACQUISITION FRAME RATE: 9HZ, 14-BIT IMAGE ACQUISITION

DATA ACQUISITION RESOLUTION : 20CM (13MMFOCAL LENGTH, @150METER HIGH)



MULTI-TRACK UAV SAVD200



- FLIGHT SPEED: 13.5 METERS/SECOND
- MAXIMUM ENDURANCE/FLIGHT TIME: 48 MINUTES
- MAXIMUM TRANSMISSION DISTANCE: 5 KILOMETERS
- WIND RESISTANCE LEVEL: LEVEL 5
- MAXIMUM SERVICE CEILING: 4500 METERS
- OPERATING TEMPERATURE RANGE: -20 TO 50°C
- SHIPPING WEIGHT: 8.5 KILOGRAMS

DIMENSIONS

- EXPANDED (L X W X H): 830 X 732 X 378 MILLIMETERS
- FOLDED (L X W X H): 955 X 362 X 378 MILLIMETERS
- DIAGONAL SIZE (WHEELBASE): 988 MILLIMETERS

50KG LOAD-BEARING DRONE

3WWDZ- 40.1B

- STRUCTURE LAYOUT: HEXACOPTER LAYOUT (SIX-AXIS LAYOUT) - SAFE AND STABLE
- EXTERNAL DIMENSIONS (L X W X H): 2152 X 2085 X 877MM
- MAXIMUM WHEELBASE/AXLE DISTANCE: 2160MM
- MAXIMUM TAKEOFF WEIGHT (MTOW): 88 ~ 97KG}
- EMPTY WEIGHT (AIRCRAFT ONLY): 48KG

HOVERING ACCURACY

- RTK POSITIONING: HORIZONTAL: $\pm 10\text{CM}$
VERTICAL: $\pm 10\text{CM}$
- HOVERING TIME: 18.9MINUTES
- OPERATING TEMPERATURE: 20 TO -50°C

CURRENT CONFIGURATION SPRAYING SYSTEM: 40.5L CENTRIFUGAL NOZZLE 2/4, SPRAYING WIDTH 10M

SPREADING BOX CAPACITY: 60L

FRONT CAMERA: FPV CAMERA (REPLACEABLE INFRARED LENS)

RESOLUTION: 1920*1080



IN ORDER TO DEVELOP THE USE OF CLASS C DRONES FOR FUTURE EXTERIOR WALL CLEANING AND THE INSTALLATION OF PIPES, ETC.

D5000



- **DIMENSIONS: (UNFOLDED) 830 X 829 X 394 MM,
(FOLDED) 469 X 467 X 173 MM**
- **MAXIMUM WHEELBASE: 599 MM**
- **MAXIMUM TAKEOFF WEIGHT: 4.1 KG**
- **EMPTY WEIGHT: 2.86 KG**
- **MAXIMUM ENDURANCE: 90 MIN**
- **RTK POSITIONING: (H) 1 CM + 1 PPM, (V) 2 CM + 1 PPM**
- **HOVERING TIME: 90 MIN**
- **OPERATING TEMPERATURE: -20°C TO 45°C**

**AERIAL PHOTOGRAMMETRY, REMOTE SENSING, PATROL INSPECTION
AND EMERGENCY SYSTEM**



SAV HK LIMITED

INFRARED CHARACTERISTICS

- LONG ENDURANCE, HIGH EFFICIENCY, HIGH RELIABILITY
- UNIQUE NIGHT VISION CAPABILITY
- ONE-STOP SOLUTION
- HIGH-PRECISION TEMPERATURE INVERSION
- FULL RADIANT THERMAL DATA COLLECTION CAPABILITY

LONG ENDURANCE, HIGH EFFICIENCY, HIGH RELIABILITY

- HOVERING TIME CAN BE SET TO 48 MINUTES
- THERMAL INFRARED RESOLUTION 40CM
- SINGLE FRAME OPERATION AREA 2KM²
- ENSURE SAFETY AND RELIABILITY

UNIQUE NIGHT VISION CAPABILITY

- NO LIGHT IS NEEDED
- PENETRATE THICK
- EVEN CAN TAKE OFF THROUGH SMOKE HAZE
- BAD WEATHER CAN ALSO TAKE OFF

ONE-STOP SOLUTION

- 3D ROUTE PLANNING
- 3D REAL-TIME FLIGHT MONITORING
- AIRBORNE AEROTRIANGULATION PROCESSING
- TEMPERATURE RESPONSE AND OTHER FULL PROCESS

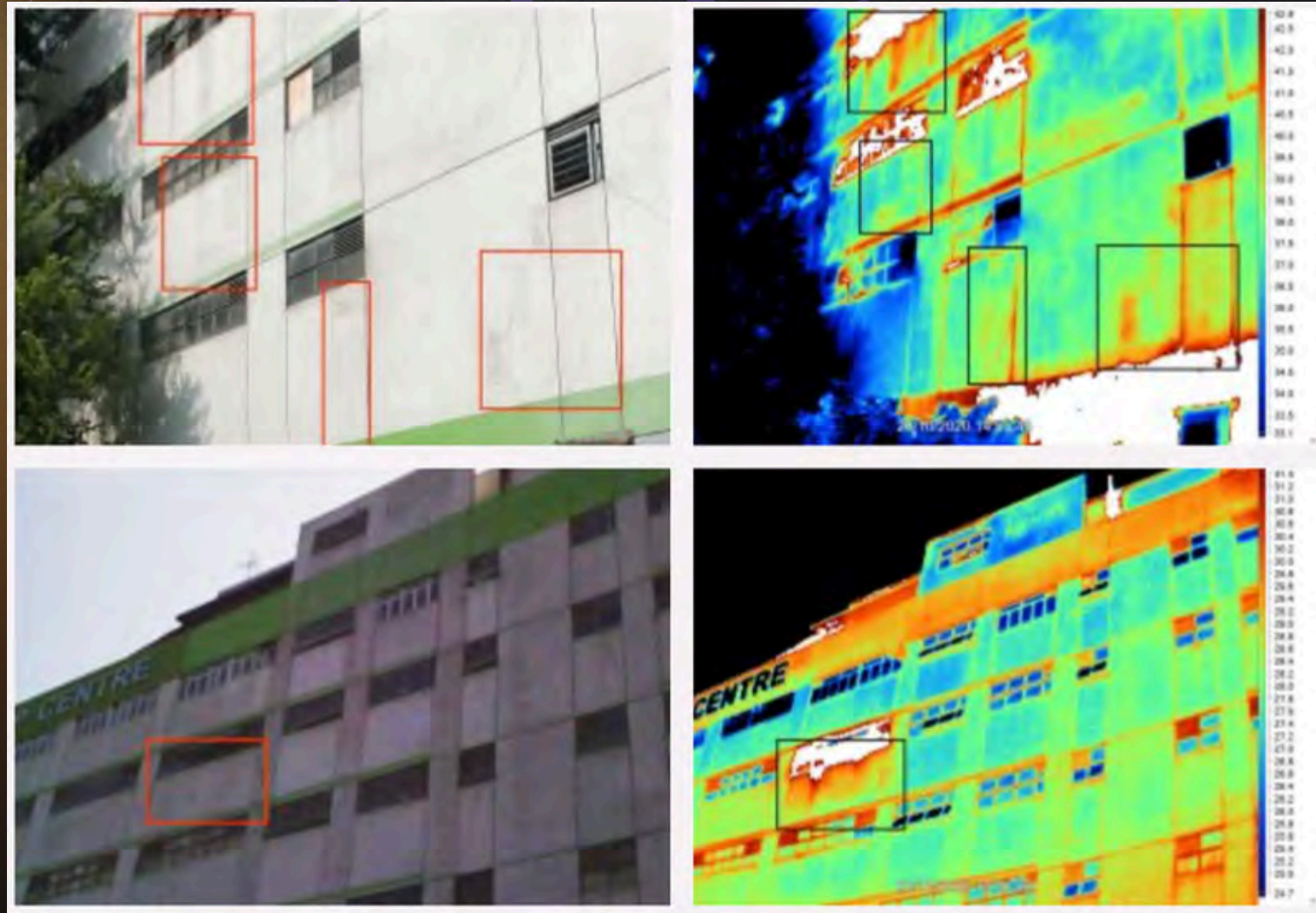
HIGH-PRECISION TEMPERATURE INVERSION

- ACCURACY UP TO 5% OF READING VALUE
- TEMPERATURE ERROR VALUE IS ONLY ~2°C

TOTAL HEAT FLUX DATA COLLECTION

- BUILDING AND ROOF INSPECTION
- POWER GRID INSPECTION
- INFRASTRUCTURE ANALYSIS
- PRECISION AGRICULTURE
- PUBLIC SAFETY

EXTERNAL WALL INSPECTION



USED FOR INDUSTRIAL NON-DESTRUCTIVE TESTING, IT CAN DETECT BUILDING INSULATION DEFECTS, WATER LEAKAGE, OVERHEATING OF ELECTRONIC EQUIPMENT, AND THE TEMPERATURE OF POWER LINES OR MECHANICAL PARTS TO ASSESS THE STATUS OF EQUIPMENT AND CONDUCT PREVENTIVE MAINTENANCE.

FIREFIGHTING APPLICATIONS



QUICKLY DISCOVER IGNITION POINTS/ TRAPPED PEOPLE



MALWARE ANALYSIS

THERMAL IMAGER

EXTERIOR WALL INSPECTION SERVICES

較輕微的缺損↓

建議於定期檢查時，進行監察或維修▼

Minor defect↓

It is recommended to conduct monitoring or maintenance during regular inspections.▼

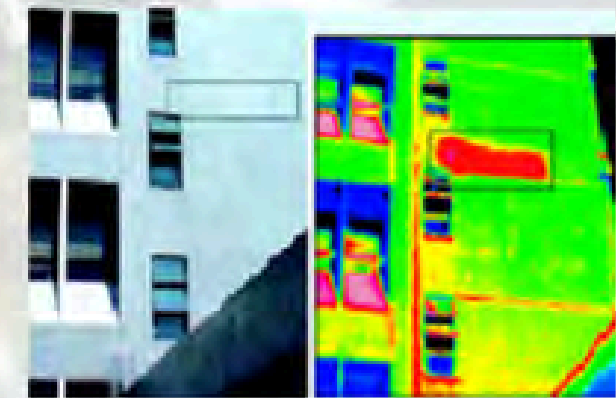


嚴重缺損建議↓

建議立即跟進及維修▼

Severe defect recommendation↓

It is recommended to follow up and repair immediately.▼



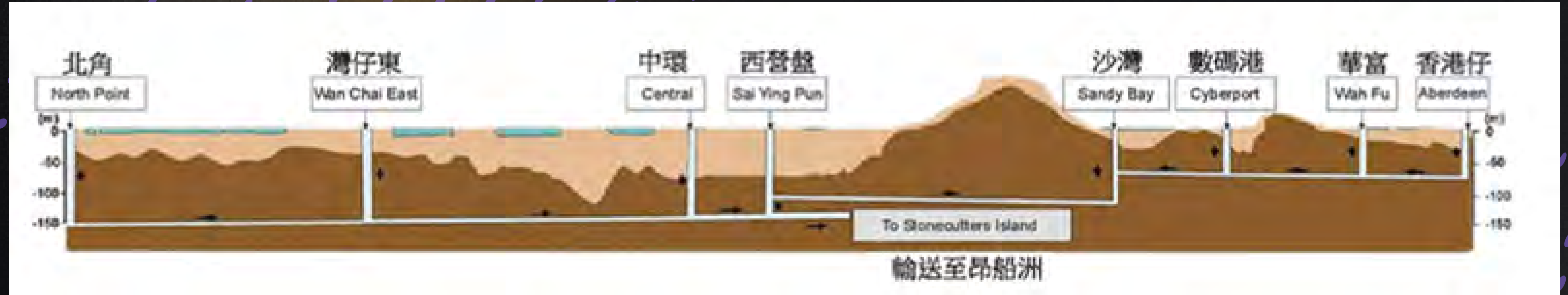
外牆飾面缺損勘察步驟

MALWARE ANALYSIS

1. 選擇適當的環境和角度，於關注面進行紅外線勘察，同時拍攝普通相片作對照
2. 同時在現場進行目視勘察，記錄所需的資料
3. 用專業軟件進行詳細的紅外線照片分析，標出懷疑缺損的位置和範圍
4. 提議跟進懷疑嚴重的缺損位置及進行維修
5. 缺損的位置維修後，問題的高溫帶已消失，這證明那位置的問題已被修妥

缺損程度分級有助安排維修方法及時間；將所有懷疑缺損的位置指示於外牆立面圖以方便追溯

CHANNEL DETECTION



TREE INSPECTION

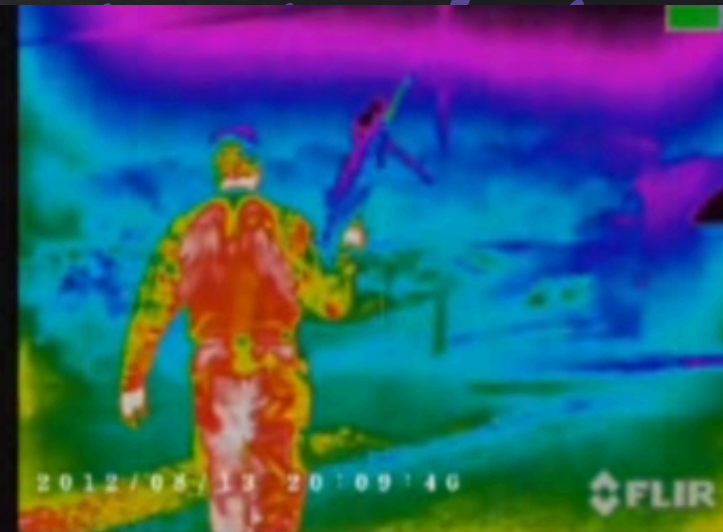


THERMAL IMAGER



SAV HK LIMITED

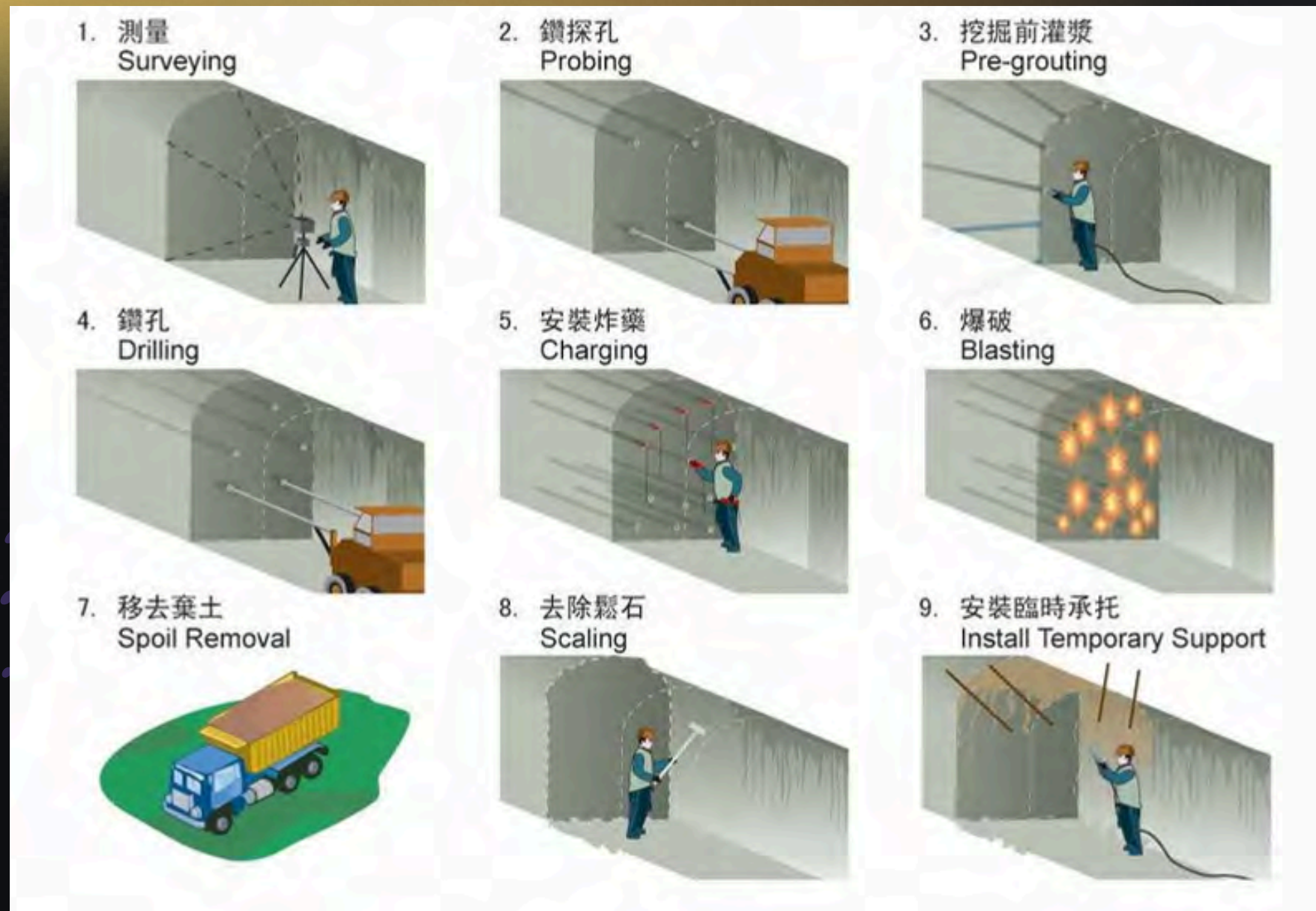
POLICE APPLICATION



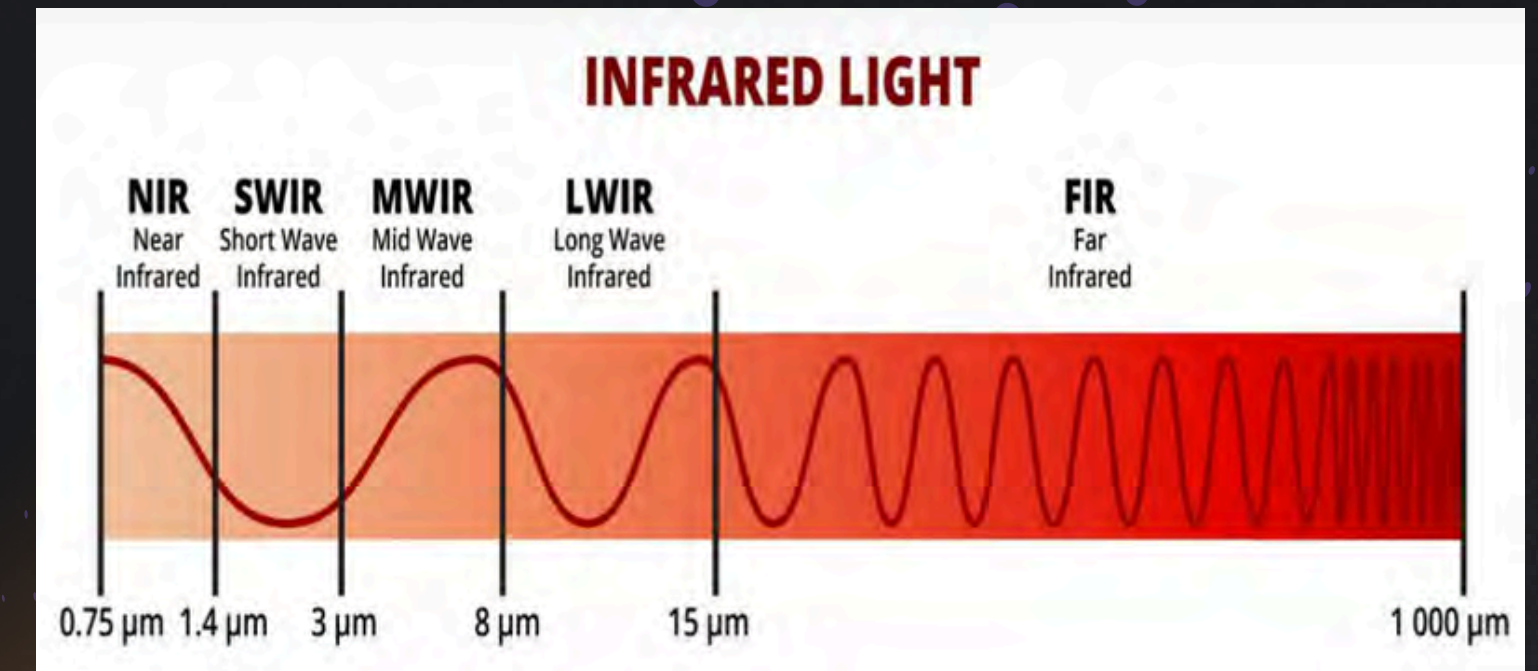
AGRICULTURE, FISHERIES AND FISHERIES AGENCY APPLICATION



THERMAL IMAGER



TUNNEL PRE-BLASTING SURVEY



Infrared spectroscopy:
Analyzes hard soil, loose gravel, topography, and underground conditions. Builds a 3D model to predict the tunnel construction area.

SERVICE PROCEDURE



STEP1: PAY 60% OF THE DEPOSIT WHEN SIGNING THE CONTRACT

STEP2:ARRANGE FLIGHT DOCUMENTS
(All documents of the Civil Aviation Department)

STEP3: SET FLIGHT ROUTE ACCORDING TO DATE

STEP4: THE PILOT PERFORMED THE FLIGHT ON THE DAY
(Licensed uav pilot and security)

STEP5: DATA COLLECTION
(See the following page for instructions)

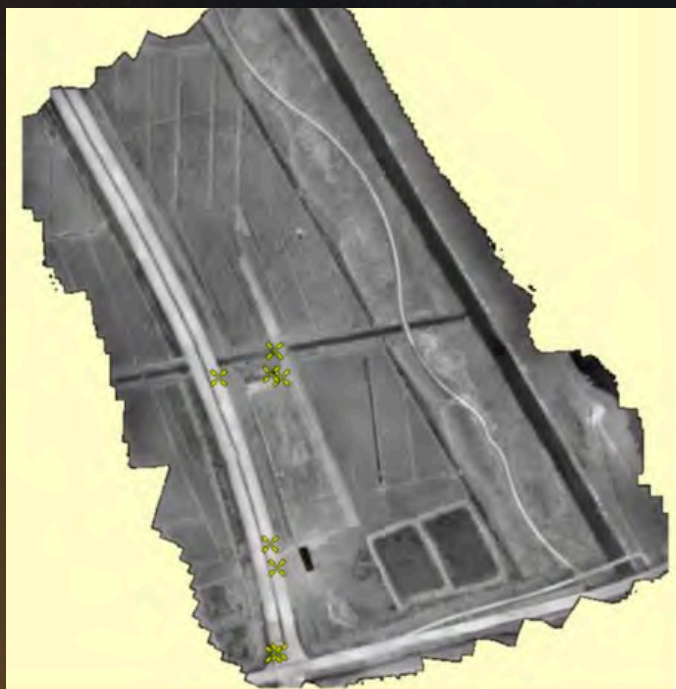
STEP6: DATA OUTPUT
(See the following page for instructions)

STEP7: PAY THE BALANCE

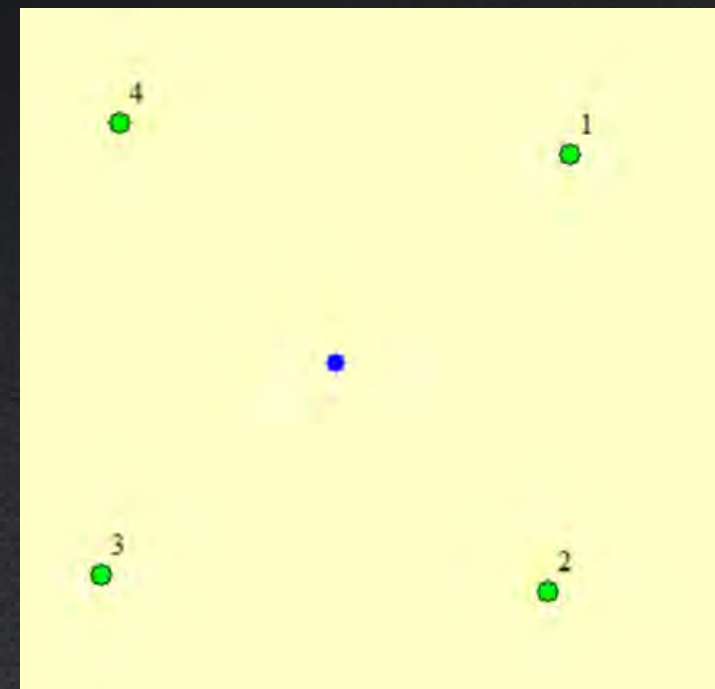
DATA COLLECTION



(FLIGHT ROUTE DESIGN)



(DESIGN OF TEMPERATURE MEASUREMENT POINT DISTRIBUTION)

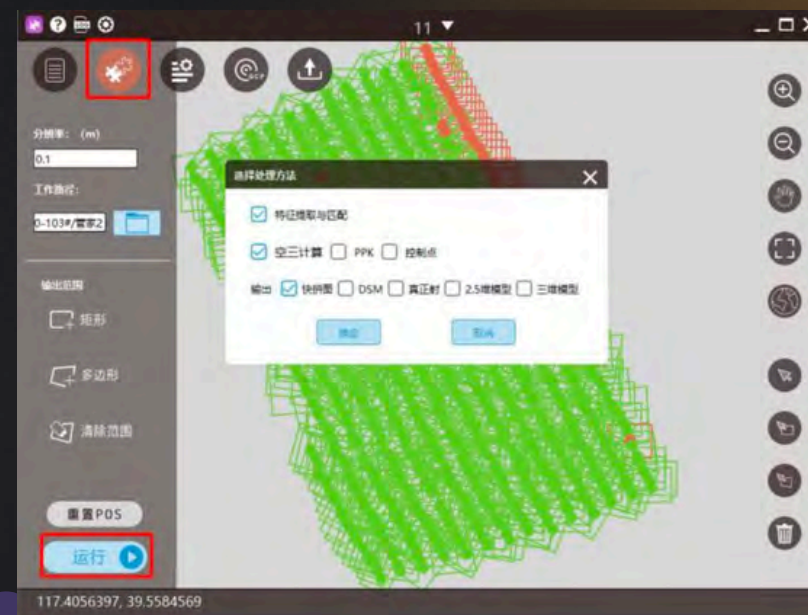


(FIELD TEMPERATURE MEASUREMENT METHODS)

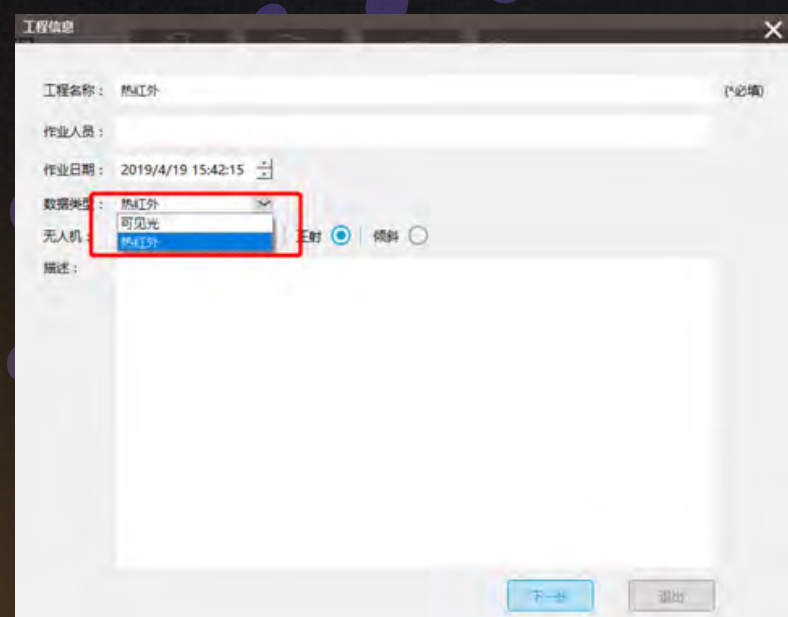
DATA PROCESSING



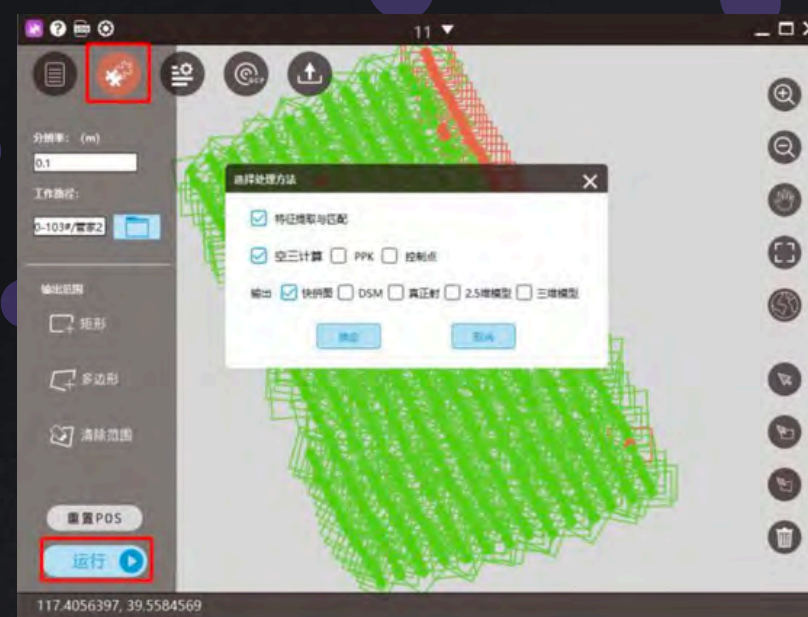
(POS CALCULATION)



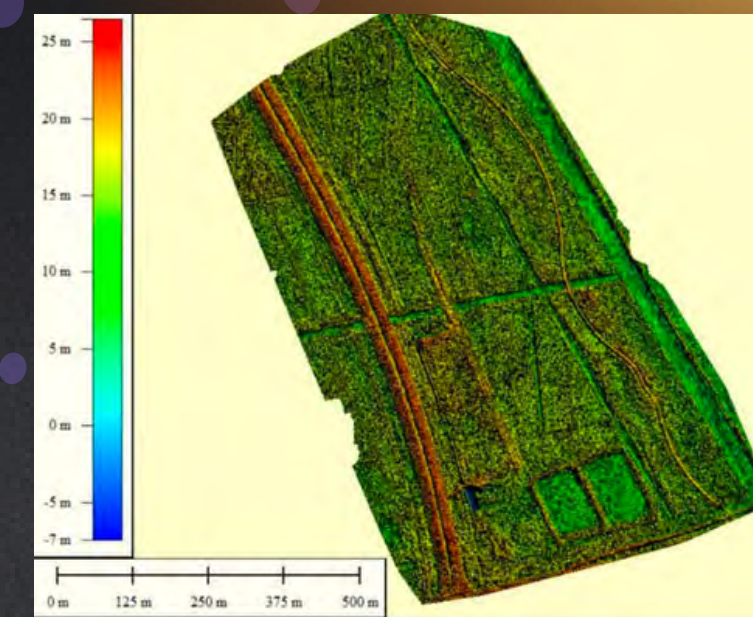
(RESULTS OF THERMAL INFRARED IMAGING)



(DISMANTLING PROJECT)



(GENERATION OF THERMAL INFRARED IMAGE)



(RESULTS OF REPEATED CALCULATIONS)

AB TEST ERROR RANGE: 1.2 TO 1.5

CONTACT US



852-6908 9784 

enquiry@savhk.tech 

www.savhkdrone.com 

@savhk.drone 



SAV HK